



BA-PHALABORWA MUNICIPALITY  
MEMORANDUM  
- BUDGET AND TREASURY -

TO : *Prospective Service Provider*  
FROM : *SCM /STORES*  
DATE : *24/03/2025*  
ENQUIRIES : *STORES*  
TELEPHONE : *015 780 6361/62*  
REF : *RFQ7461*

Kindly furnish this office with a written quotation for supply of goods/ services as detailed below. The quotation must be submitted on the letterhead of your Business and Brought to our offices 3 Nyala Street, Phalaborwa not later than **31/03/2025 at 12H00**

QUANTITY	Description	PRICE/UNIT (Inc. VAT)	DELIVERY PERIOD
X02	Procurement uniform for 2 Environment Management inspectors		
	SEE ATTACHED SPECIFICATION		

**Please number your quotes (Your Ref no)**

*The following conditions will apply:*

- *Price (s) quoted must be valid for at least thirty (30) days from date of your offer.*
- *The municipality retains the prerogative to reject any quotes it deems to be excessive*
- *A firm delivery period must be indicated.*
- *Tax Clearance Pin*
- *A service provider be registered with central supplier database (CSD)*
- *Completed MBD4 (Declaration of Interest) Form*
- *Evaluation criteria: 80/20 (Whereby 80 is for price and 20 is for Objective goals)*
  - 20 is further evaluated : 20 for 100% Black owned;*
  - 18 for at least 51% Black owned; and*
  - 14 for Less than 51% Black owned*

Ba-Phalaborwa complies with the requirements of protection of personal information Act 4 of 2013 and Promotion of Access of Information Act 2 of 2000.

# MEN'S BODYWARMER

100% Polyester Ripstop



**FABRIC:** 100% Polyester Ripstop

**WEIGHT:** 280 gm2

**SIZES:** S M L XL 2XL 3XL 4XL

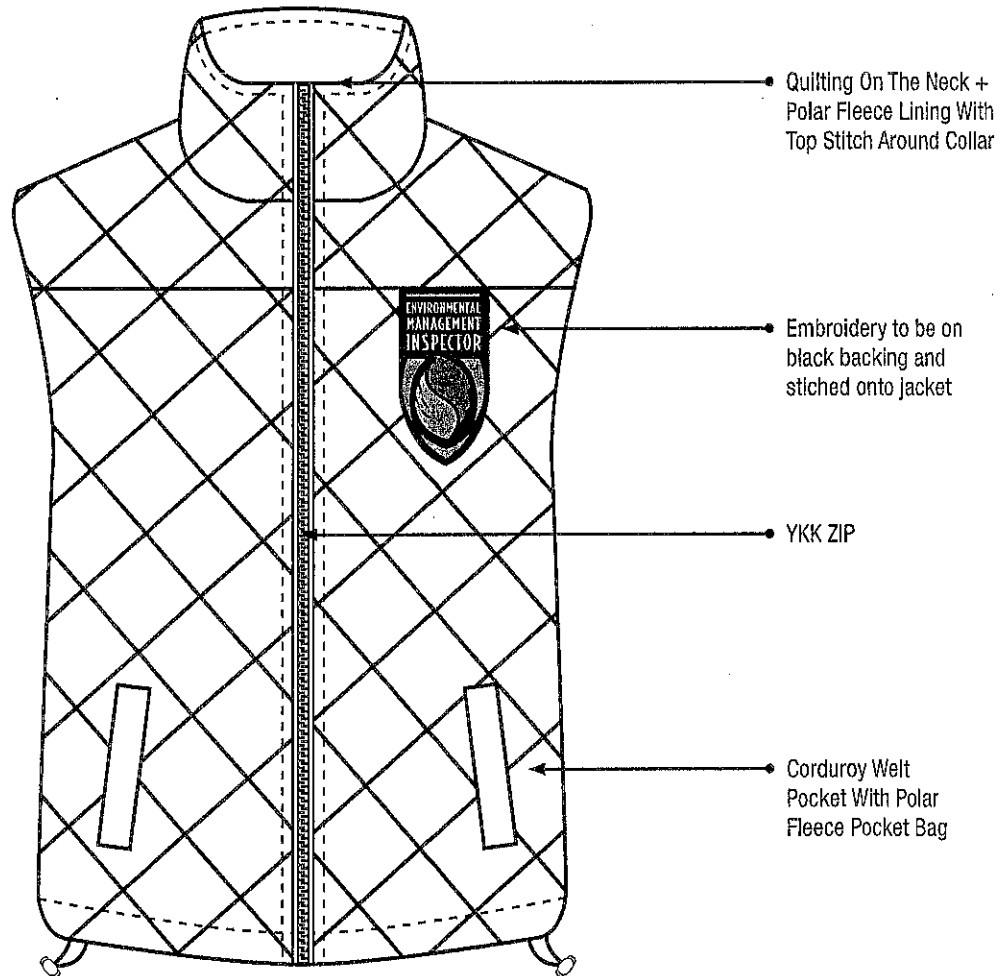
**COLOURS:** Black

Diamond quilted ripstop / Fleece collar and pocket lining / Corduroy trims / Draw cord in hem with adjustable toggles with safety catch / Front welt pockets, concealed chest pocket and safety pocket



# LADIES BODYWARMER

100% Polyester Ripstop



**FABRIC:** 100% Polyester Ripstop

**WEIGHT:** 280 gm2

**SIZES:** S M L XL 2XL 3XL

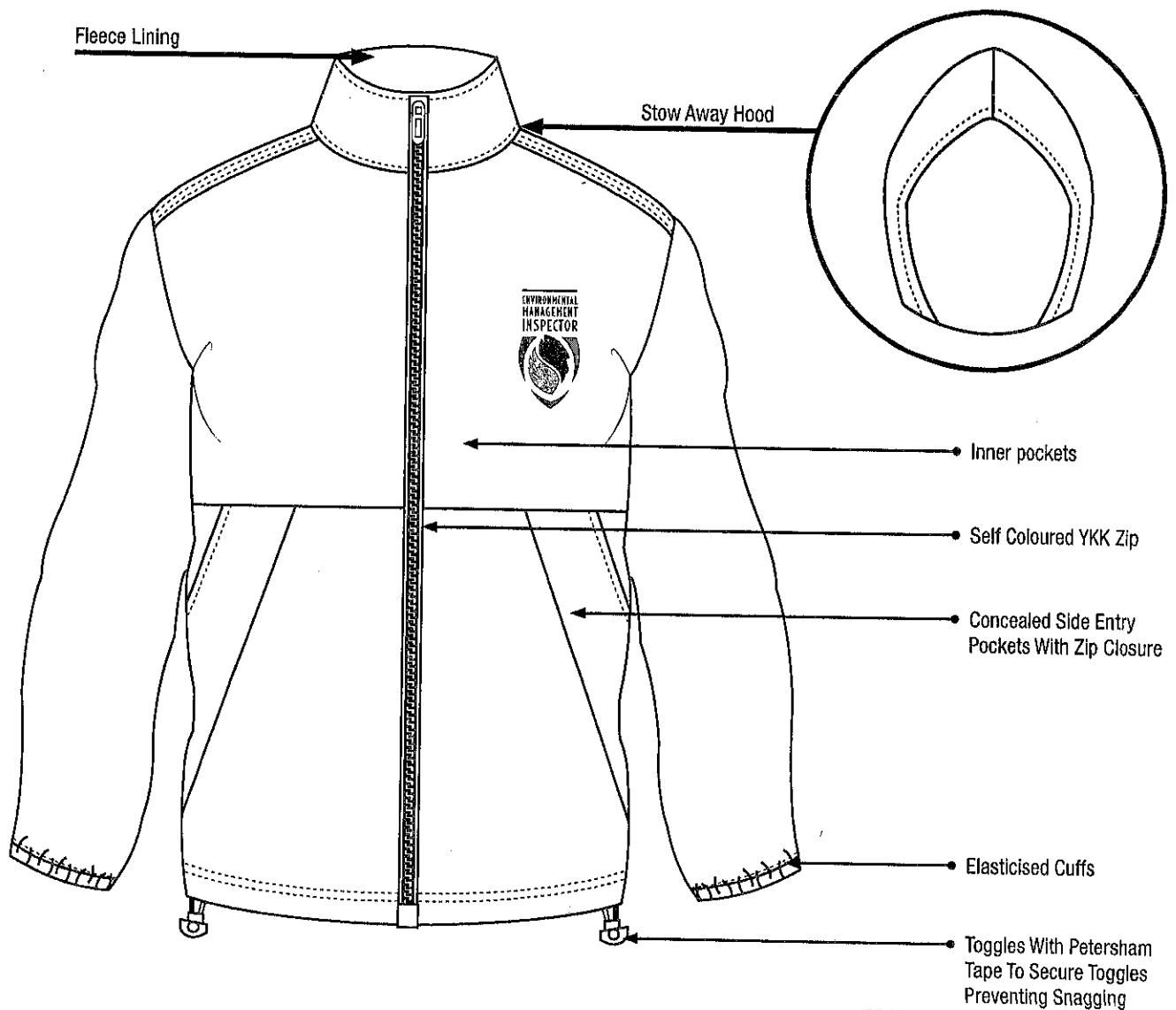
**COLOURS:** Black

Women's fit with curved hem / Diamond quilted ripstop / Fleece collar and pocket lining / Corduroy trims / Front welt pockets, concealed chest pocket and safety pocket



# DRY MAC JACKET

Water resistant



**FABRIC:** Water Resistant Polyester/Polar Fleece Lining

**WEIGHT:** 140gm<sup>2</sup>/ 270gm<sup>2</sup>

**SIZES:** S M L XL 2XL 3XL 4XL

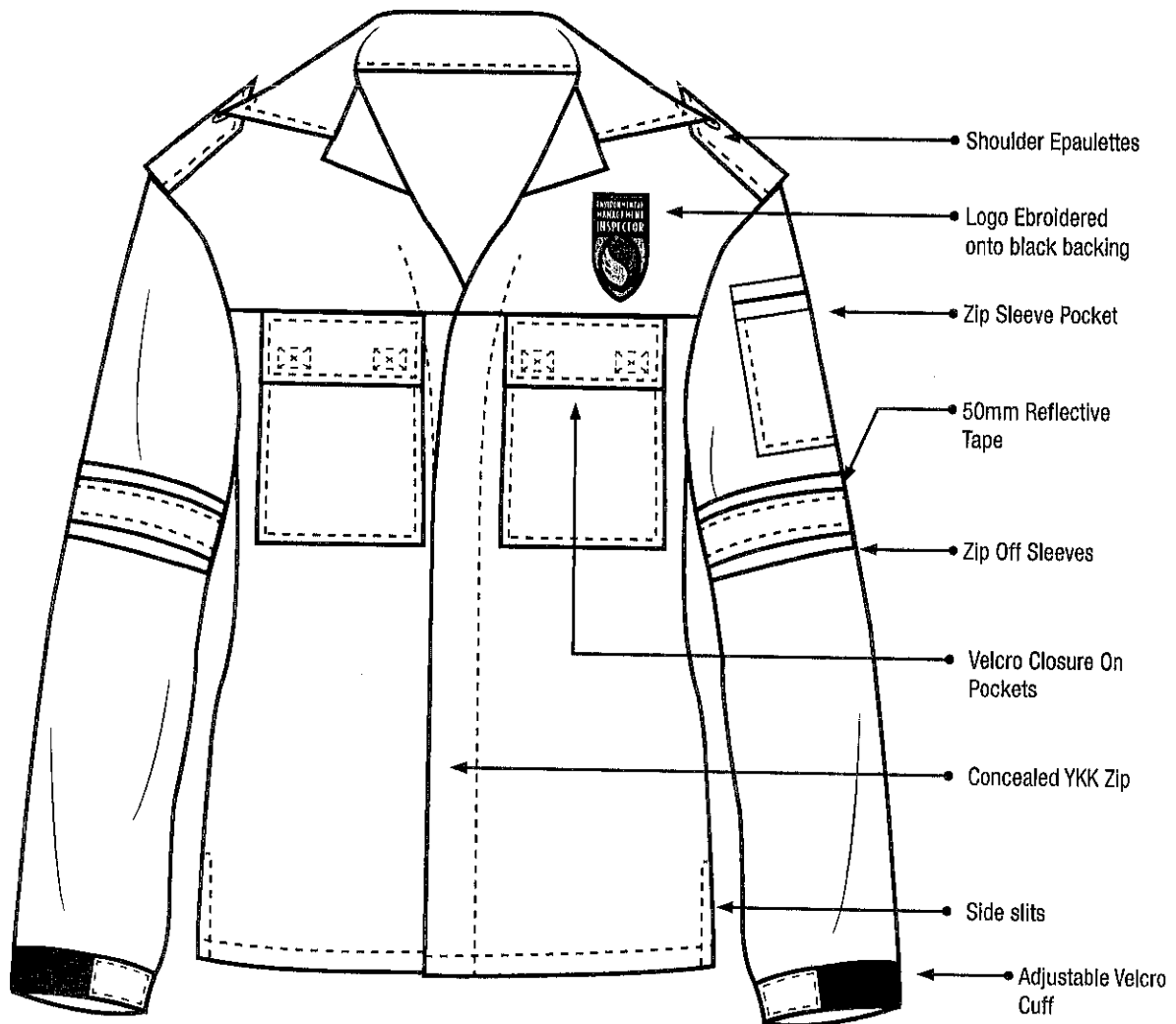
**COLOURS:** Black

Water resistant / Self colour polar fleece lining / Concealed side entry pockets with zip closure / Concealed cellphone pocket / Inner chest and back safety pockets / Elasticised cuffs / Stow away hood (fits into collar with hook and loop) / Toggles with Petersham tape to secure toggles to prevent snagging / YKK zip with puller / Heat sealed seams for improved water resistance



# MX40

Rip Stop design



## JACKET

**FABRIC:** 65% Polyester / 35% Viscose

**WEIGHT:** 200 gm2

**SIZES:** S M L XL 2XL 3XL 4XL

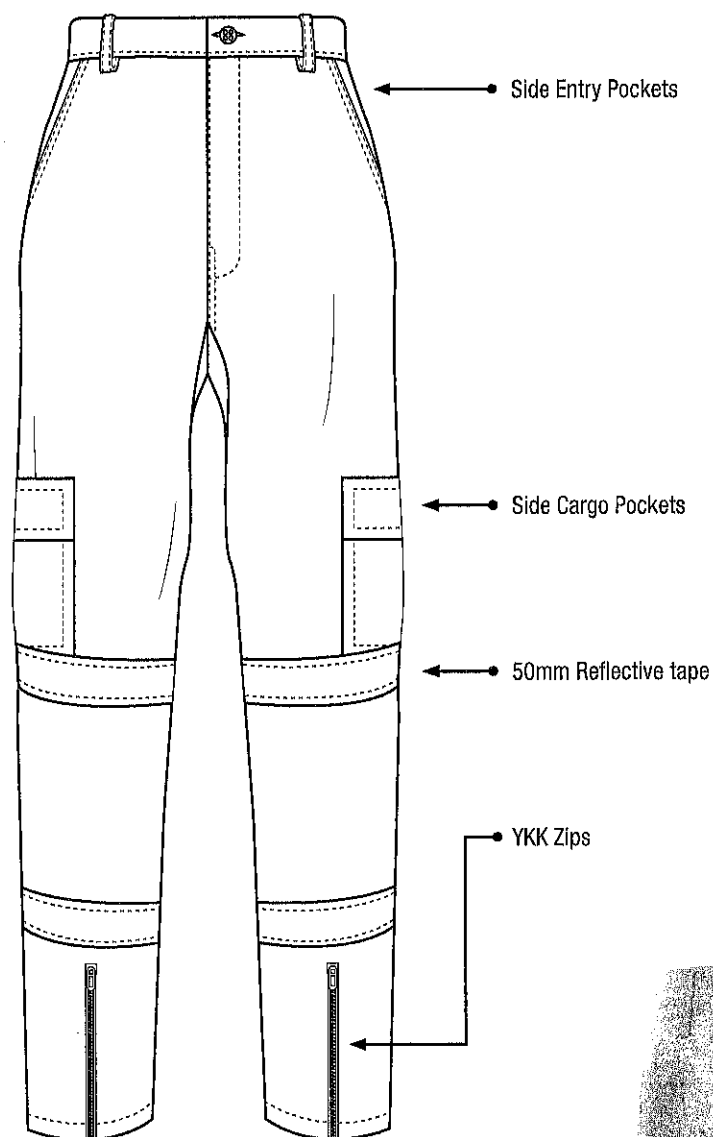
**COLOURS:** Khaki (16-1106 TPX)

Chest pockets with velcro closure /  
Large front pockets for convenient storage / Concealed  
YKK Zip / Side slits for ease of movement / Bar tacks on  
stress points for extra strength



# 2 PIECE MX40

Rip Stop design



## TROUSER

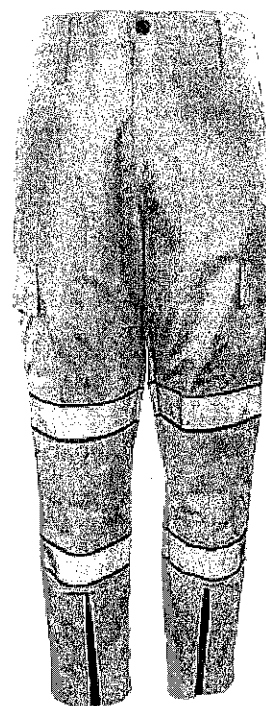
**FABRIC:** 65% Polyester / 35% Viscose

**WEIGHT:** 200 gm2

**SIZES:** S M L XL 2XL 3XL 4XL

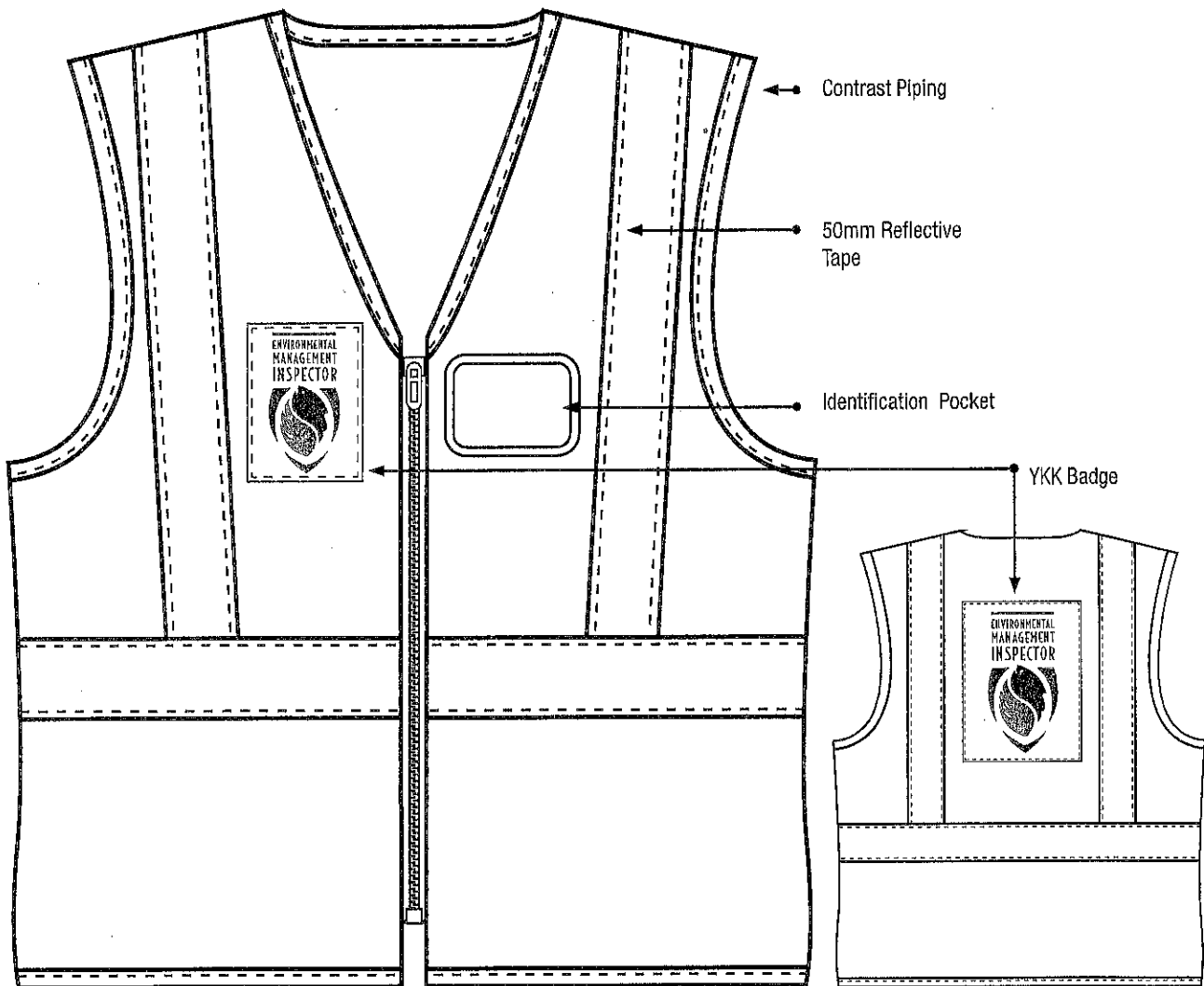
**COLOURS:** Khaki (16-1106 TPX)

Rip stop design / Large side entry pockets / Side cargo pockets / YKK Zips / Bar tacks on stress points for extra strength / Reflective tape



# REFLECTIVE VEST

Fluorescent dyed material



**FABRIC:** 100% Polyester fabric

**WEIGHT:** 120g

**SIZES:** S M L XL 2XL 3XL 4XL

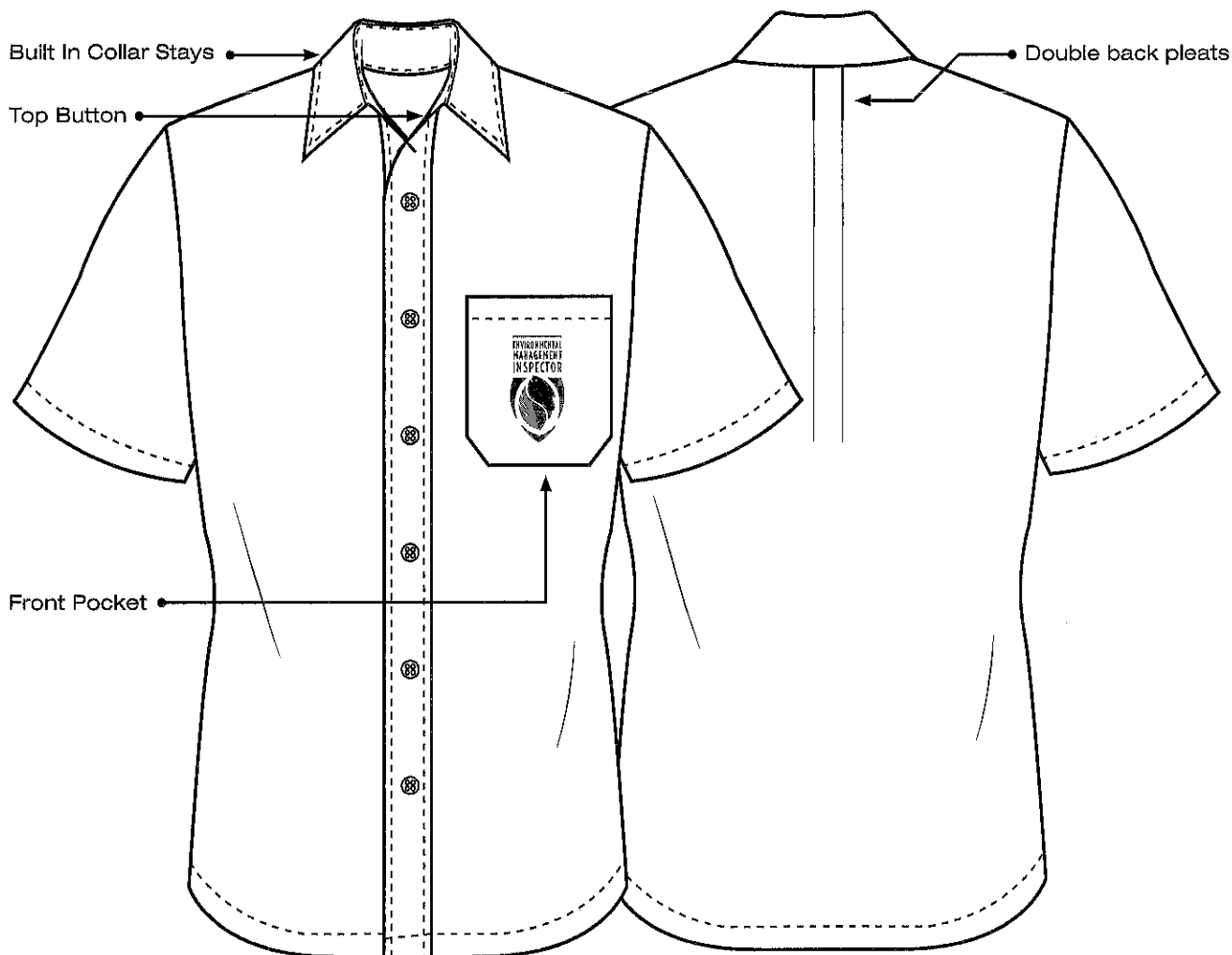
**COLOURS:** Green

Lightweight / Full zip front / Identification Pocket /  
Front & back reflective tape



# MEN'S FORMAL S/S SHIRT

Polycotton poplin



**FABRIC:** 65/35 Polycotton Poplin

**WEIGHT:** 105 gm2

**SIZES:** S M L XL 2XL 3XL 4XL

**COLOURS:** Black / White

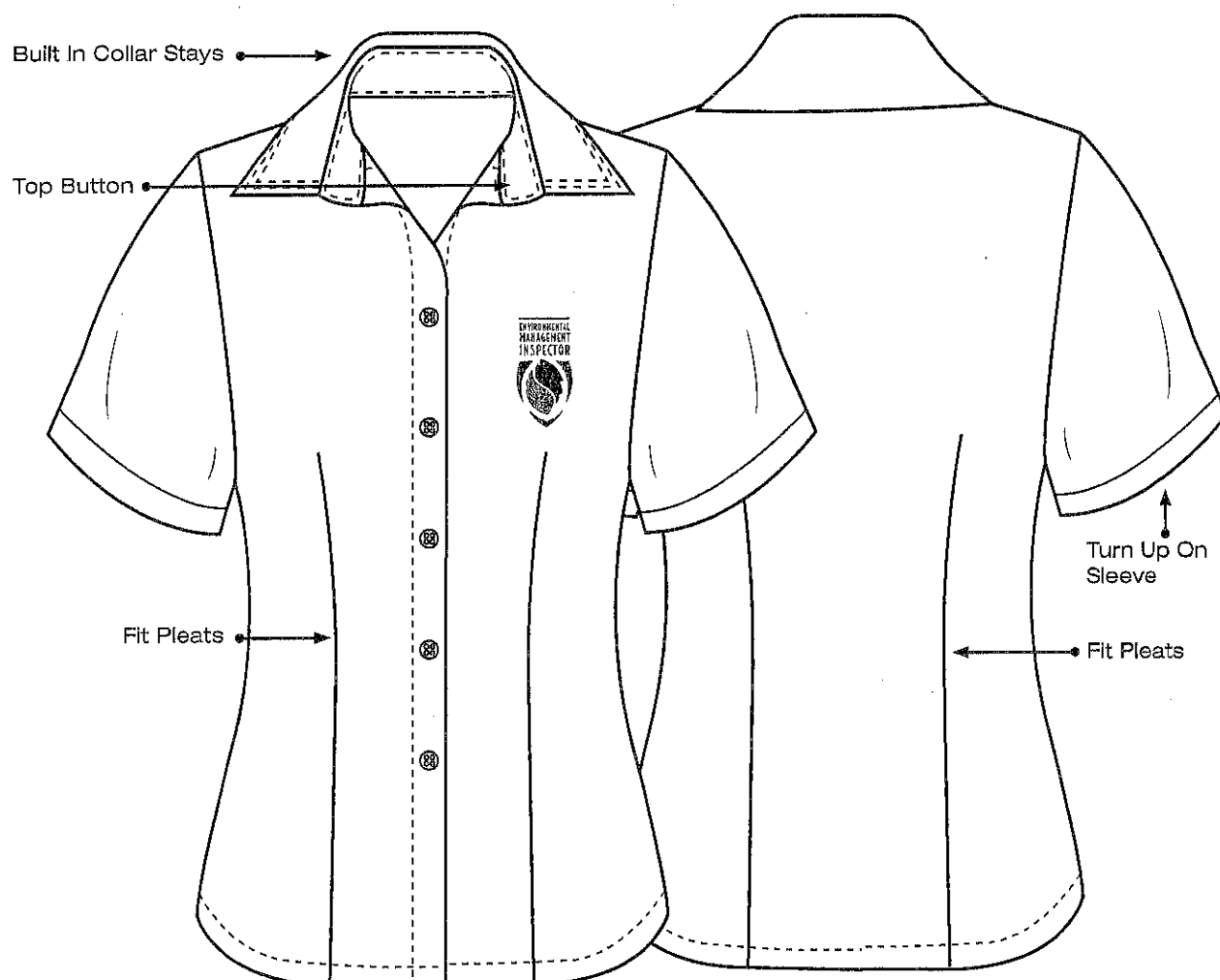
Double back pleats for ease of movement / Button down front / Built in collar stays / Chest pocket / Top stitching on yoke, shoulder and armholes for added strength / Posted side seams





# LADIES FORMAL S/S SHIRT

Polycotton poplin



**FABRIC:** 65/35 Polycotton Poplin

**WEIGHT:** 105 gm2

**SIZES:** S M L XL 2XL 3XL 4XL

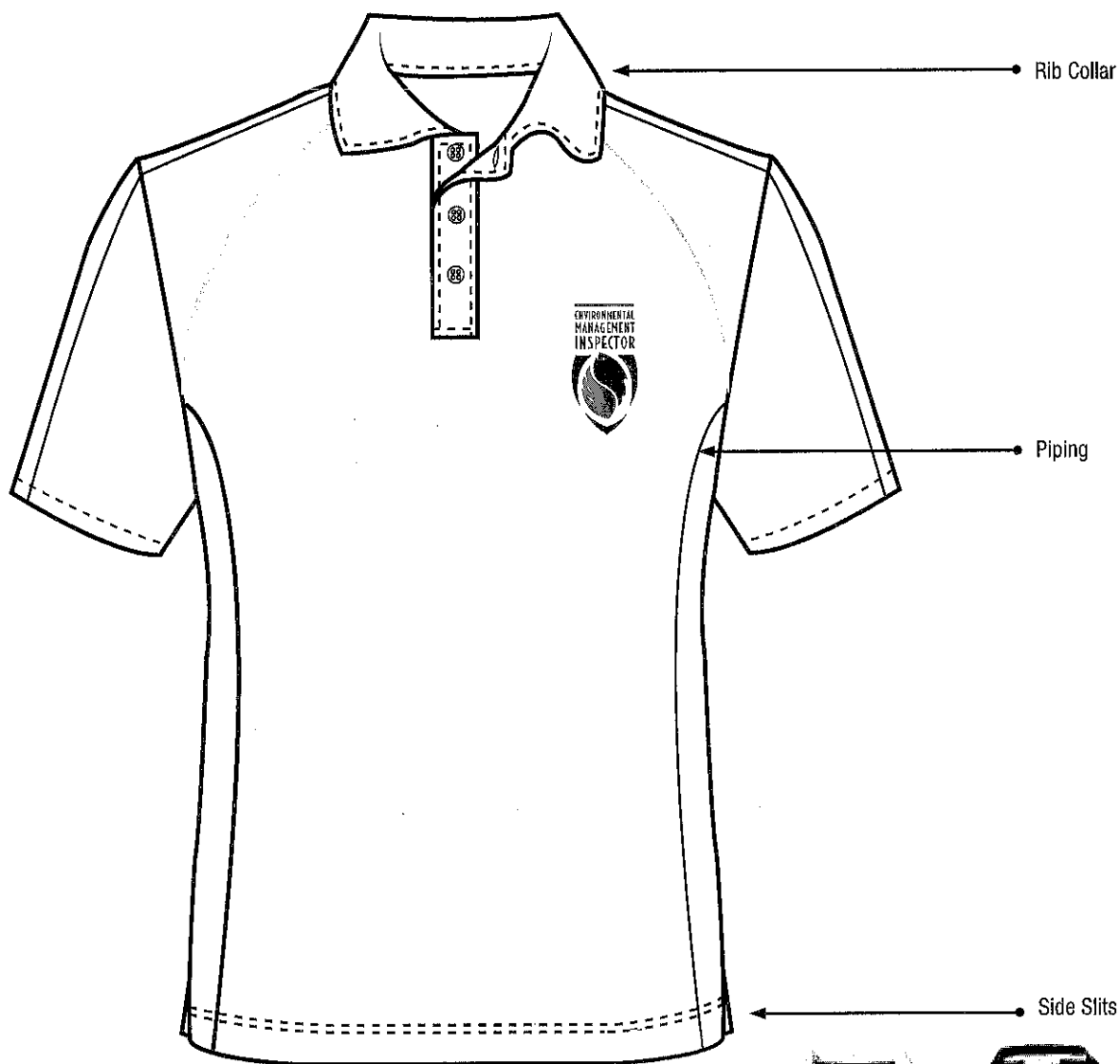
**COLOURS:** Black / White

Single side pleats / Button down front / Built in collar stays / Top stitching on yoke, shoulder and armholes for added strength / Turn up on sleeve



# MEN'S S/S GOLFER WITH PIPING

100% cotton pique knit



**FABRIC:** 100% Cotton piqué knit

**WEIGHT:** 180 gm2

**SIZES:** S M L XL 2XL 3XL 4XL

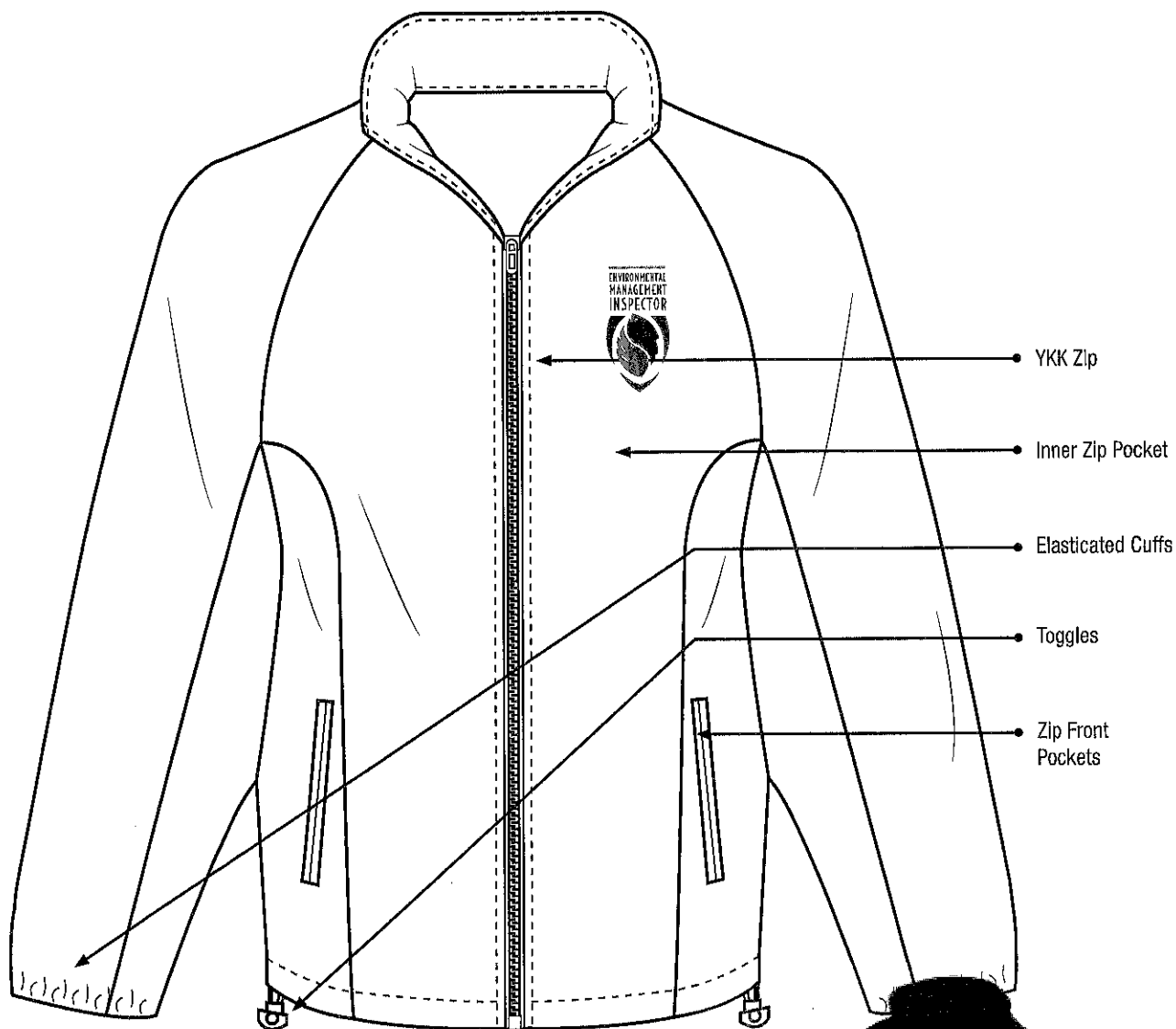
**COLOURS:** Black / White

1x1 rib knit collar / Contrast colour neck tape / button placket / Contrast piping on sleeves and body



# MEN'S FLEECE JACKET

100% Polyester polar fleece



**FABRIC:** 100% Polyester Polar Fleece

**WEIGHT:** 320 gm2

**SIZES:** S M L XL 2XL 3XL 4XL

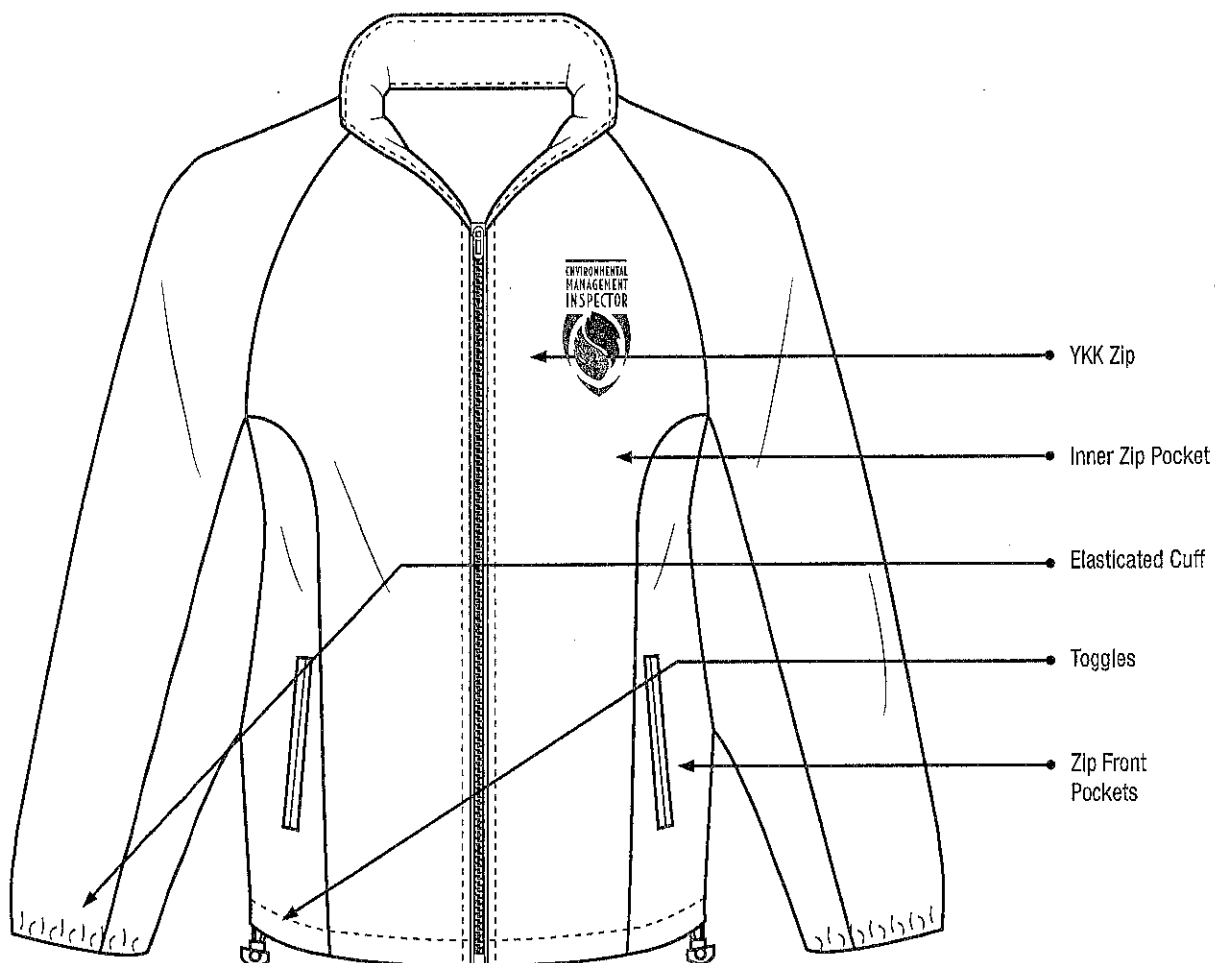
**COLOURS:** Black

Heavy weight polar fleece with lining / Side pockets /  
Toggles with Petersham tape to secure toggles to  
prevent snagging



# LADIES FLEECE JACKET

100% Polyester polar fleece



**FABRIC:** 100% Polyester Polar Fleece

**WEIGHT:** 320 gm2

**SIZES:** S M L XL 2XL 3XL 4XL

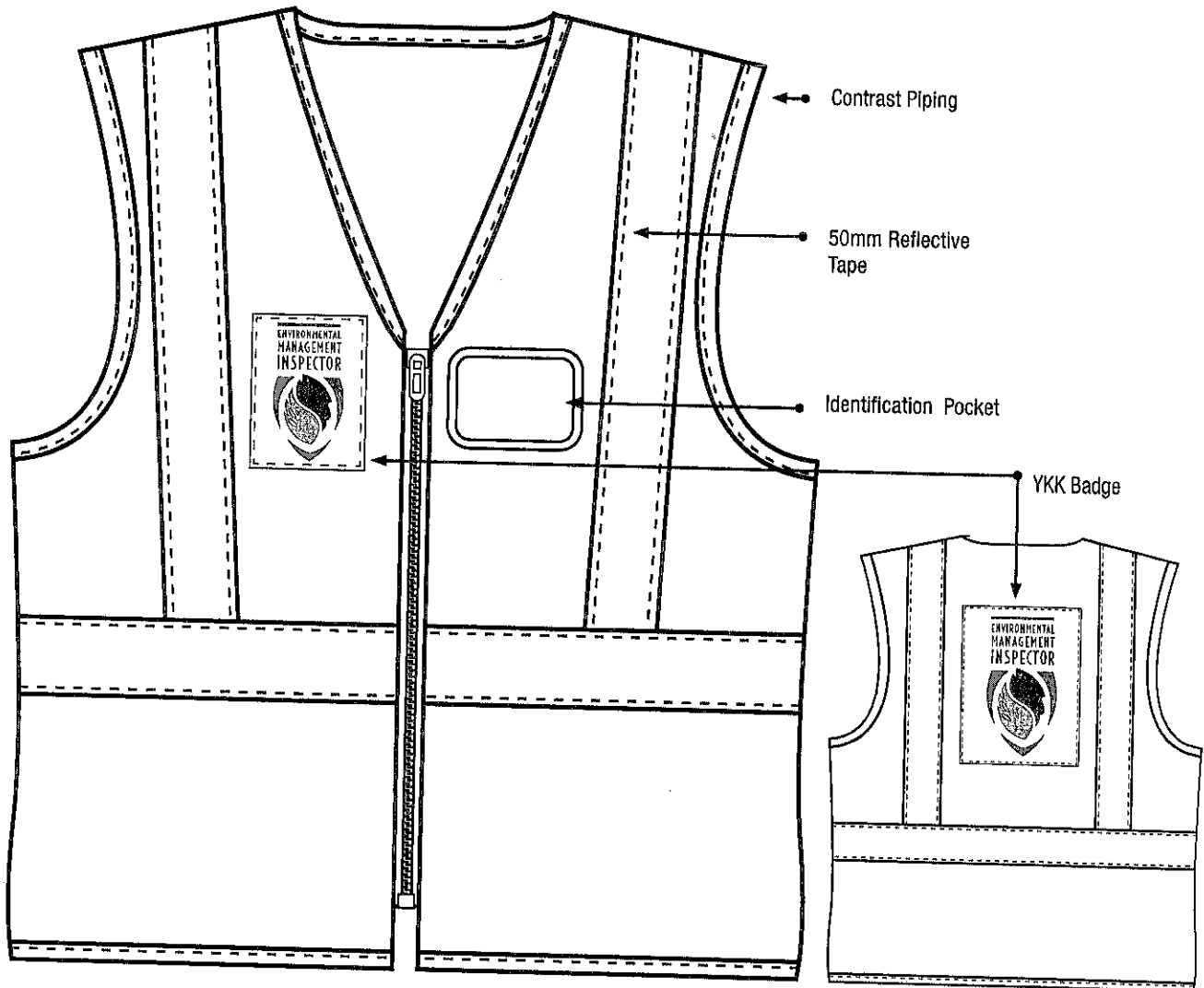
**COLOURS:** Black

Heavy weight polar fleece with lining / Side pockets /  
Toggles with Petersham tape to secure toggles to  
prevent snagging



# REFLECTIVE VEST

Fluorescent dyed material



**FABRIC:** 100% Polyester fabric

**WEIGHT:** 120g

**SIZES:** S M L XL 2XL 3XL 4XL

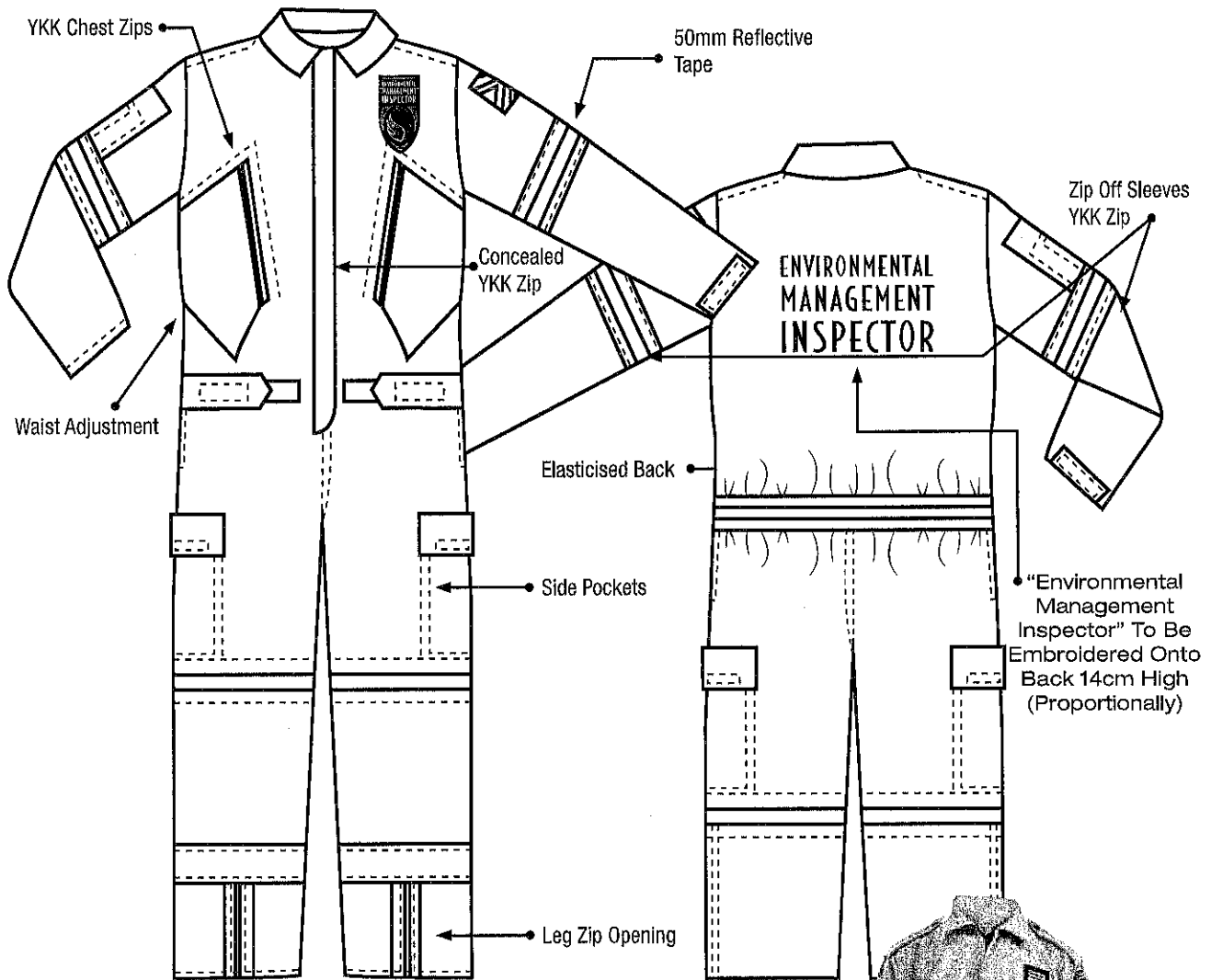
**COLOURS:** Green

Lightweight / Full zip front / Identification Pocket /  
Front & back reflective tape



# 1 PIECE MX40

Acid resistant / Flame retardant



**FABRIC:** 65% Polyester / 35% Viscose

**WEIGHT:** 200 gm2

**SIZES:** S M L XL 2XL 3XL 4XL

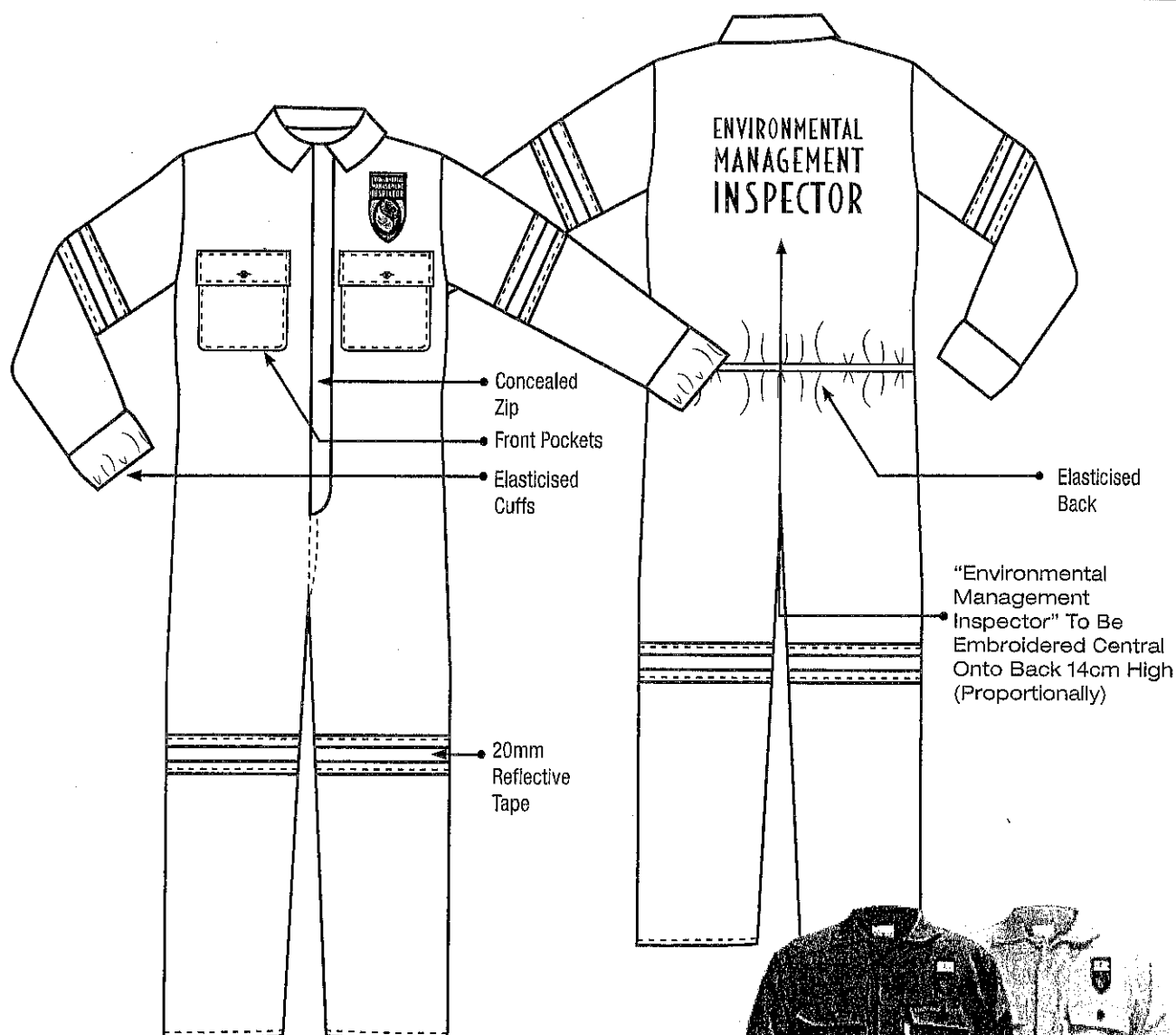
**COLOURS:** Khaki (16-1106 TPX)

Rip stop design / Chemically treated to repel acid splashes, oil and water / Triple needle stitching on all seams for extra strength Center / YKK chest zips / 50mm reflective tape for increased visibility / Concealed YKK Zip / Zip off sleeves / Half elasticised waistband for comfort



# 1 PIECE REFLECTIVE CONTI-SUIT

Acid resistant / Flame retardant



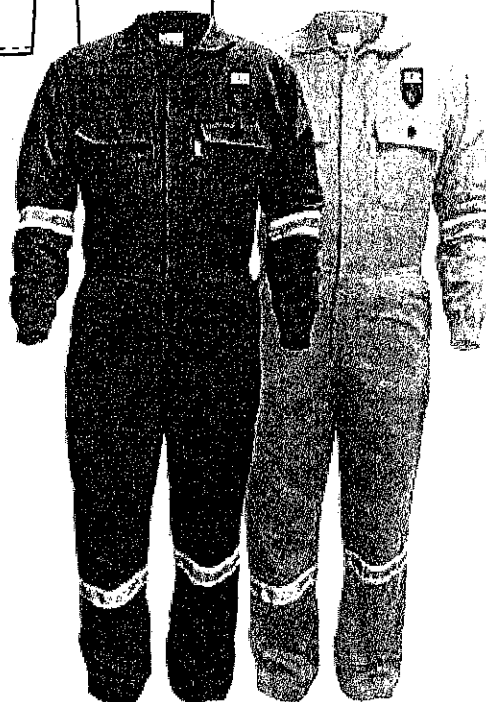
**FABRIC:** 77/23 Polyviscose Twill

**WEIGHT:** 230 gm2

**SIZES:** S M L XL 2XL 3XL 4XL

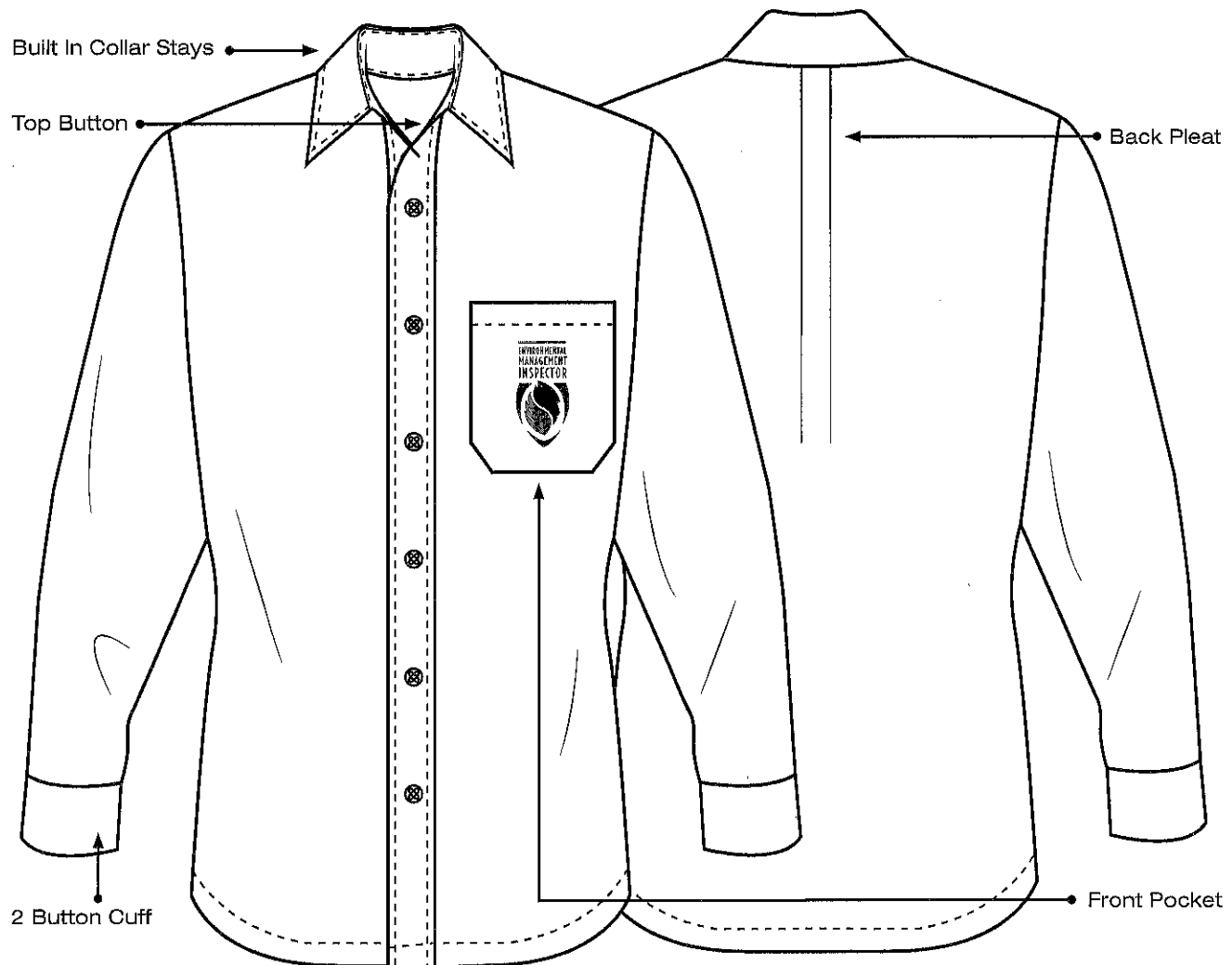
**COLOURS:** Khaki (16-1106 TPX) / Olive (19-0419 TPX)

25mm reflective tape for increased visibility /  
Chemically treated to repel acid splashes, oil and water  
/ Triple needle stitching on all seams for extra strength /  
Concealed zip / Zip guard / Bar tacks on all stress points



# MEN'S FORMAL L/S SHIRT

Polycotton poplin



**FABRIC:** 65/35 Polycotton Poplin

**WEIGHT:** 105 gm2

**SIZES:** S M L XL 2XL 3XL 4XL

**COLOURS:** Black / White

Double back pleats for ease of movement / Button down front / Built in collar stays / Chest pocket / Top stitching on yoke, shoulder and armholes for added strength / Posted side seams / 2 Button cuff





**SLEEVELESS BODYWARMER  
EMBROIDERY DETAILS**

FRONT EMBROIDERY



10 CM (INCLUDING  
BACKING)

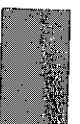
**PANTONE COLOURS**



GREEN  
PANTONE 362 C  
C 70 / M 10 / Y 100 / K 0  
R 41 / G 153 / B 38



BLUE  
PANTONE 307 C  
C 100 / M 10 / Y 0 / K 20  
R 0 / G 120 / B 171



BROWN  
PANTONE 7512 C  
C 10 / M 60 / Y 100 / K 30  
R 153 / G 89 / B 5